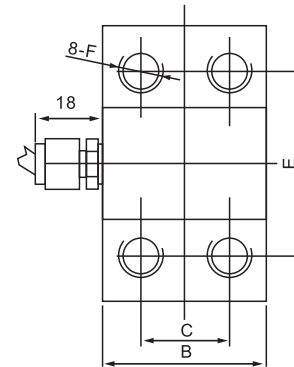
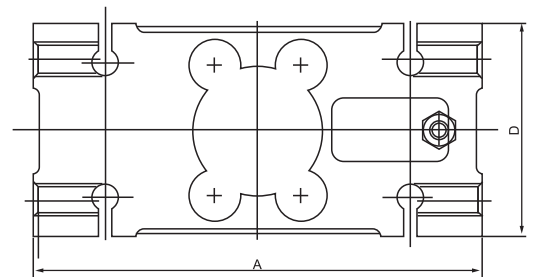
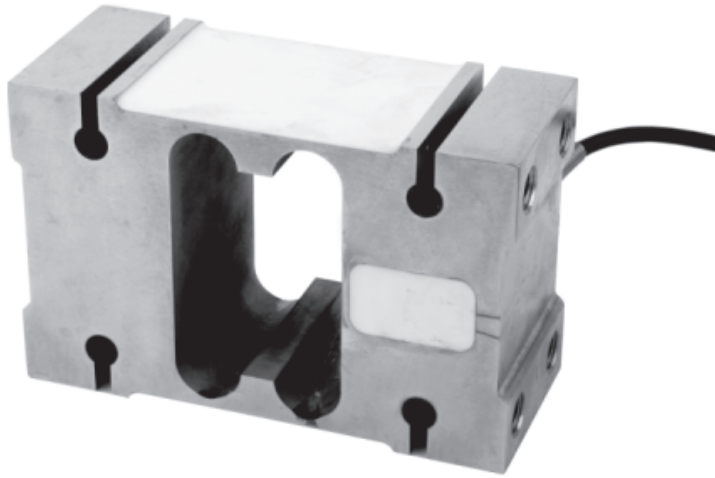


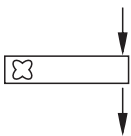


**ILGB/-A/-SS/-ASS Loadcell**

**ILGB/-A/-SS/-ASS**



额定载荷(kg) Rated Load	A	B	C	D	E	F
(胶封) 50~200	156	44	24	75	50	M12
250~500	146	60	36	95	70	M12
750~2000	176	76	46	125	95	M18



Blending scale, packing scale, dynamic testing system, platform scale

**TECHNICAL PARAMETER** OAP version 4Wires:Exc+(Blue);Exc-(Black);Sig+(White);Sig-(Red)

Rated capacities(Emax)	50,100,200,250,500,750,1000,2000kg	Temperature range, compensated	-10℃~+40℃
Sensitivity	2.0±0.2mV/V	Temperature range, operating	-30~+70℃
Total error	±0.03%F.S	Maximum safe overload	150%F.S
Creep error (30min)	±0.03%F.S	Ultimate overload	200%F.S
Zero balance	±1%F.S	Excitation, recommended	10~12V DC
TC ZERO	±0.02%F.S/10℃	Excitation, maximum	15V DC
TC SPAN	±0.02%F.S/10℃	Protection class	IP65
Input resistance	400±20Ω	Construction	Alloy Steel
Output resistance	352±3Ω	Cable	Length:3m
Insulation resistance	≥5000MΩ		Diameter: φ5mm