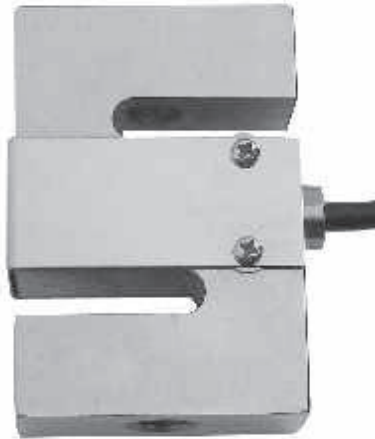




DEE/DEF-A/-SS/-ASS Loadcell

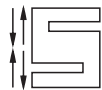
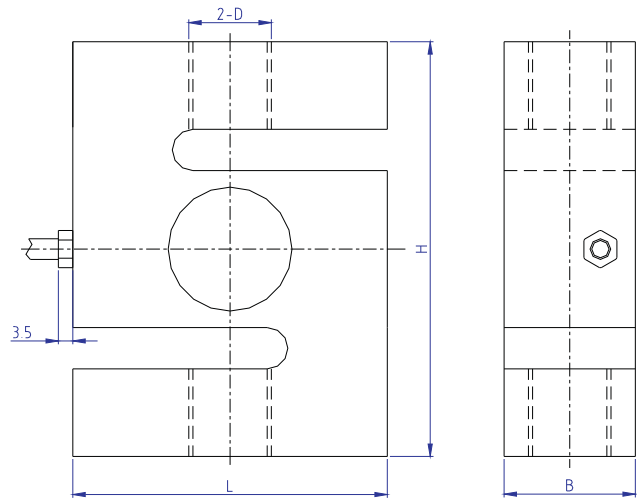
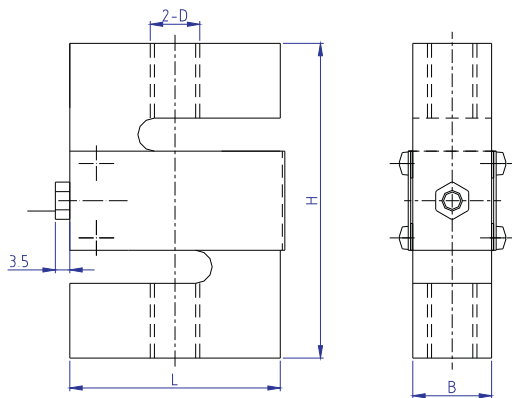
DEE/DEF-A/-SS/-ASS



| Rated Load(kg) | D | L | H | B |
|----------------|---------|------|-------|------|
| 100~750 | M12 | 51 | 76.2 | 19.1 |
| 1000 | M12 | 51 | 76.2 | 25.4 |
| 1200~5000 | M20x1.5 | 76.2 | 100.4 | 31.8 |

100~100kg

1.2~5t



Crane scale, belt scale, blending system

TECHNICAL PARAMETER

OAP version 4Wires:Exc+(Blue);Exc-(Black);Sig+(White);Sig-(Red)

| | | | |
|------------------------|--|--------------------------------|------------------------------------|
| Rated capacities(Emax) | 100,150,200,250,300,500,750kg;1,1.2,1.5,2,3,5t | Temperature range, compensated | -10°C~+40°C |
| Sensitivity | 2.0±0.003mV/V(DEE);3.0±0.003mV/V(DEF) | Temperature range, operating | -30~+70°C |
| Accuracy class | C2~C5 | Maximum safe overload | 120%F.S |
| | | Ultimate overload | 150%F.S |
| Zero balance | ±1%F.S | Excitation,recommended | 10~12V DC |
| TC ZERO | ±0.02%F.S/10°C | Excitation,maximum | 15V DC |
| TC SPAN | ±0.02%F.S/10°C | Protection class | IP65(100~1000kg);IP68(1200~5000kg) |
| Input resistance | 400±20Ω | Construction | Alloy Steel, Stainless Steel |
| Output resistance | 352±3Ω | Cable | Length:5m |
| Insulation resistance | ≥5000MΩ | | Diameter: φ 5mm |